

THIS IS A NEW SPECIFICATION



ADVANCED GCE
GEOGRAPHY
Global Issues

F763/I/2**INSERT 2 – RESOURCE BOOKLET**

Monday 21 June 2010
Afternoon

Duration: 2 hours 30 minutes

**INFORMATION FOR CANDIDATES**

- This document consists of **8** pages. Any blank pages are indicated.

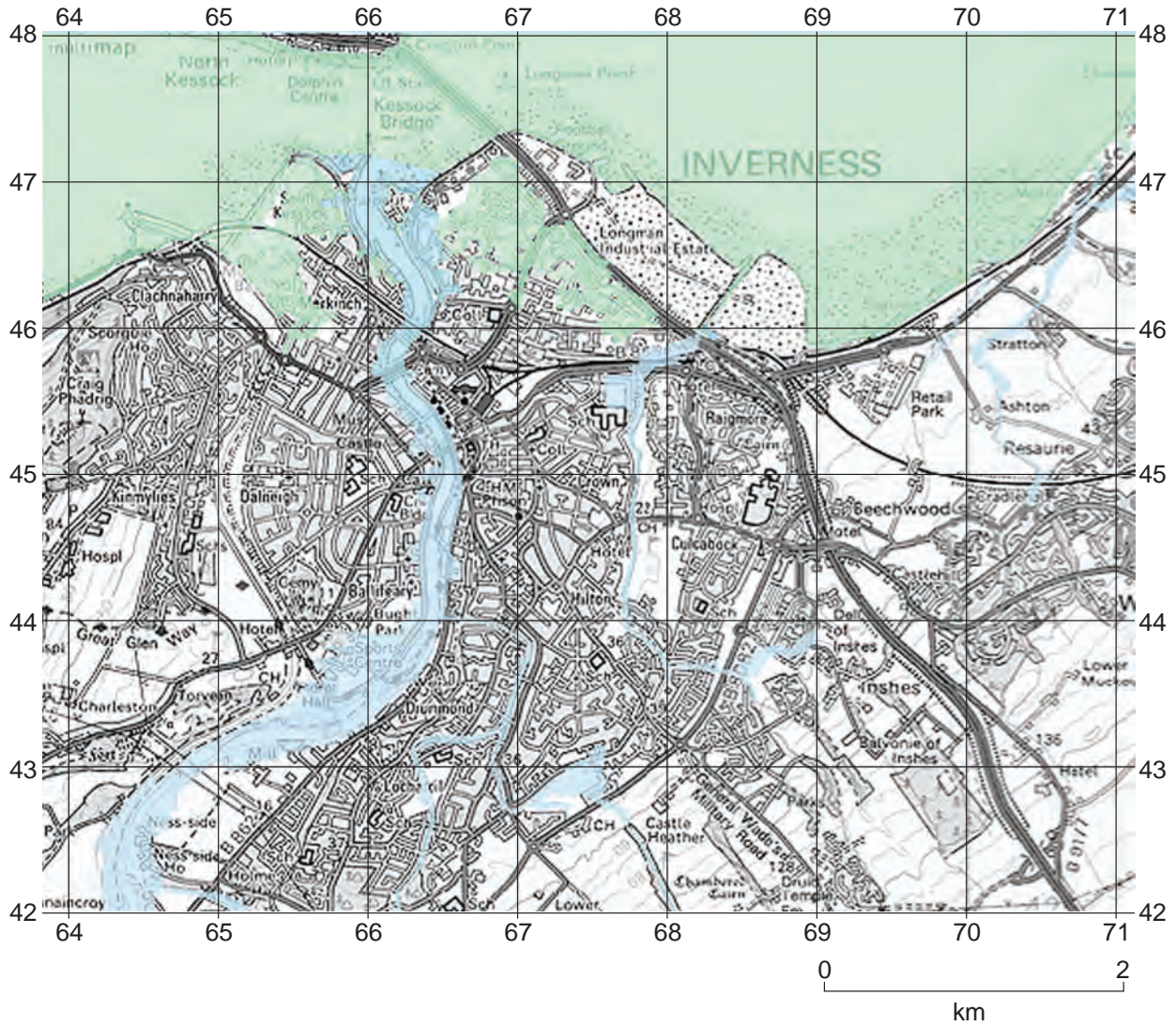
INSTRUCTION TO EXAMS OFFICER/INVIGILATOR

- Do not send this Insert for marking; it should be retained in the centre or destroyed.

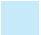

Earth hazards

Fig. 1

Areas at risk from river and coastal flooding, Inverness, northern Scotland



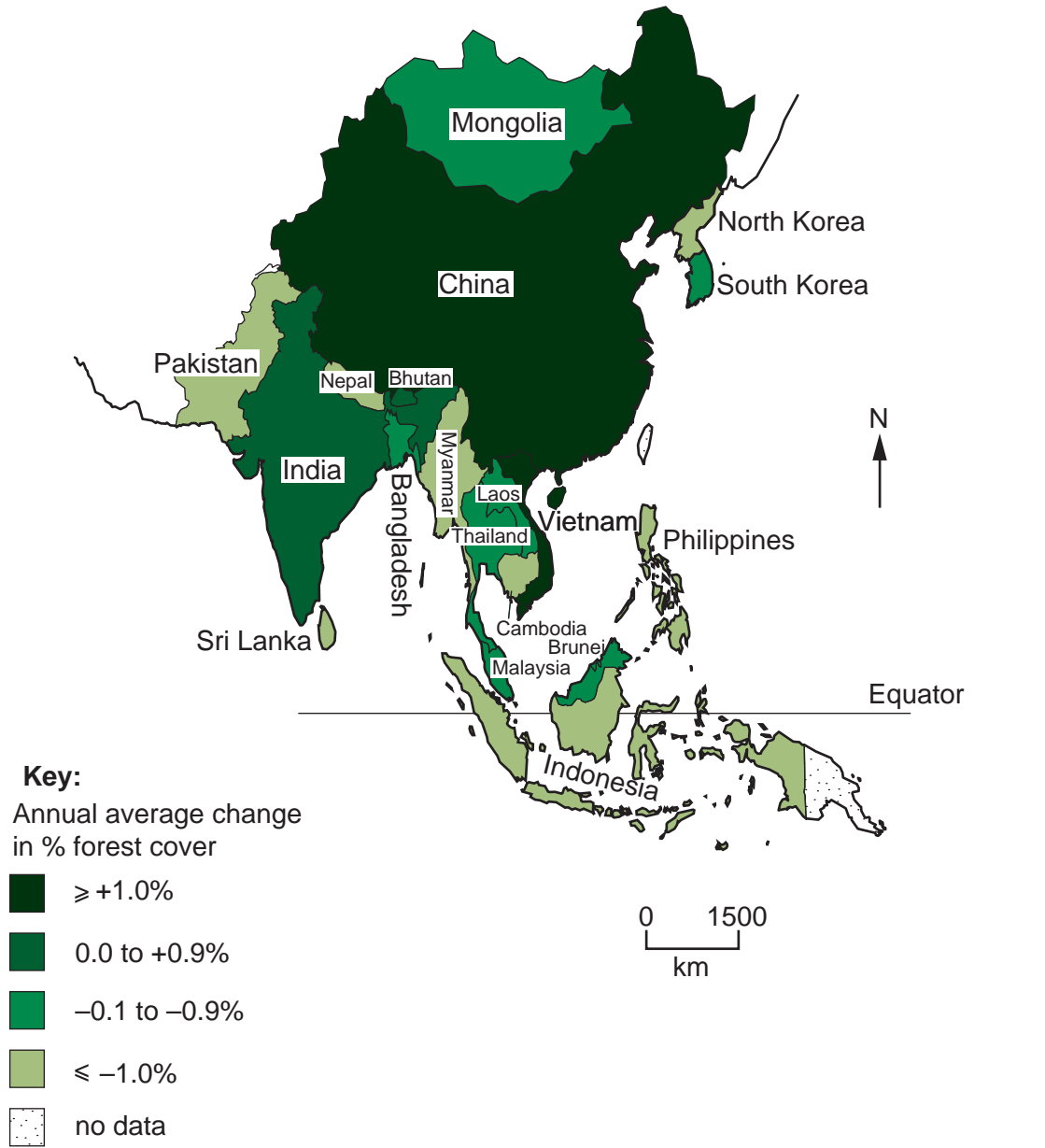
Key:

-  Areas likely to be covered during river flooding
-  Areas likely to be covered during coastal flooding

Ecosystems and environments under threat

Fig. 2

Annual average change in % forest cover, by country, in part of Asia, 1998–2008

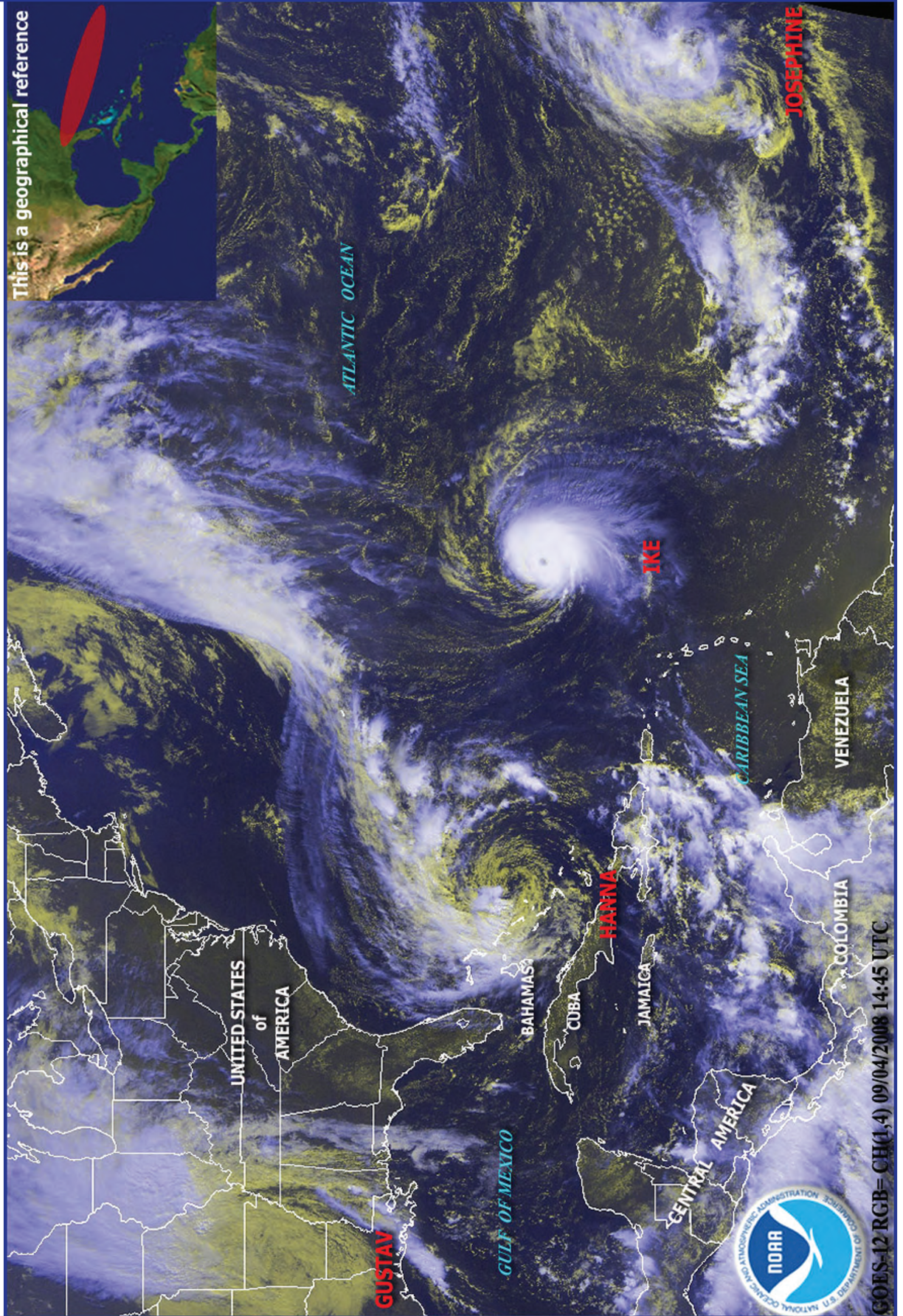


Climatic hazards

Fig. 3

Satellite image of Caribbean, September 2008

In the Atlantic Ocean, a series of three tropical storms are lined up and moving towards the USA. At 1500 UTC (previously known as Greenwich Mean Time) on Sep. 04, Tropical Depression Gustav is located near Missouri. Tropical Storm Hanna has weakened slightly and is located at 24.5N 73.5W moving northwest at 12 mph with maximum sustained winds of 65 mph. Category 4 Hurricane Ike is located at 23.2N 57W moving West-northwest at 16 mph with maximum sustained winds of 140 mph. Tropical Storm Josephine is about 520 miles west of the Cape Verde Island with maximum sustained winds of 50 mph.



Population and resources

Fig. 4

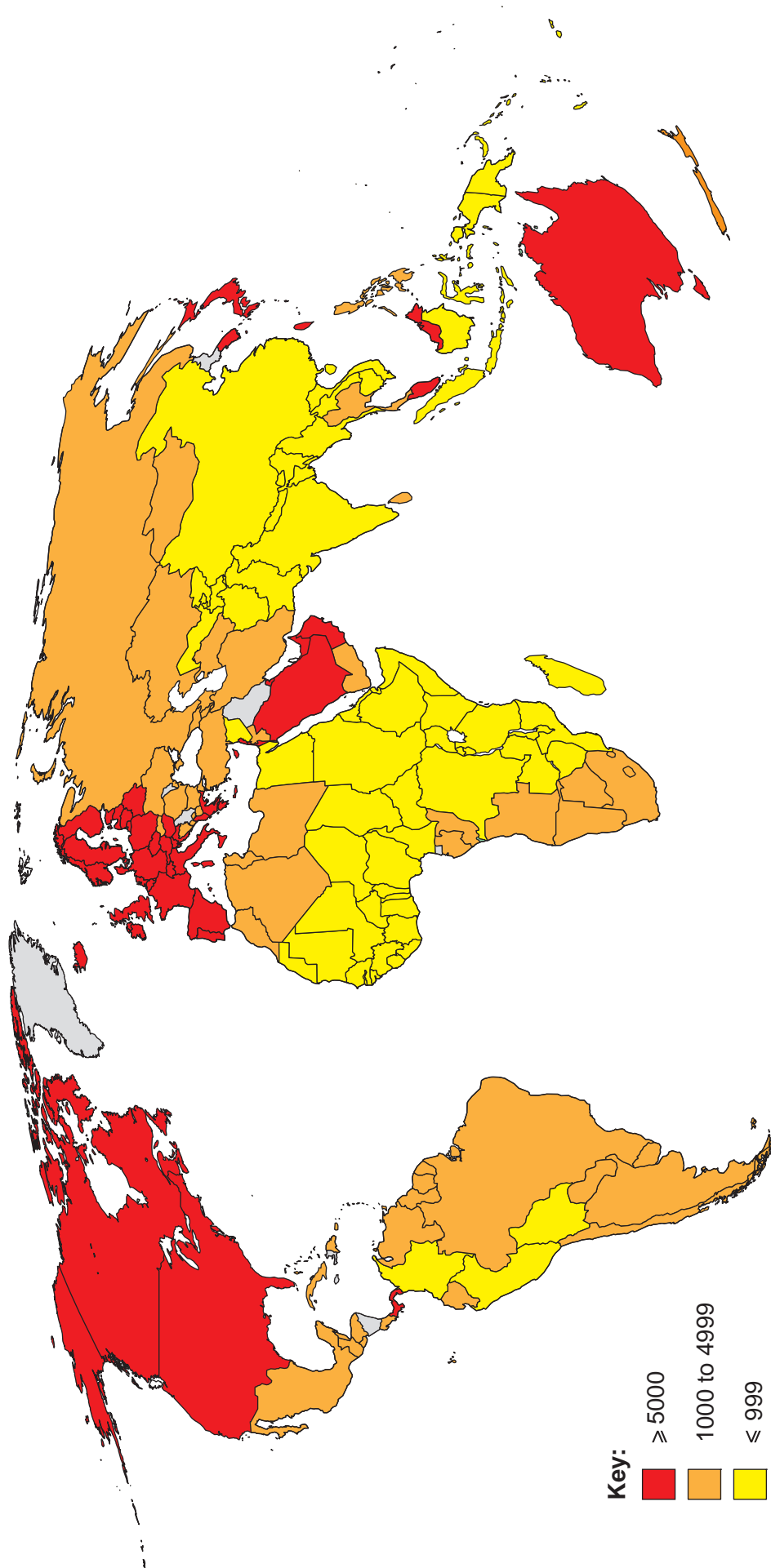
Population and resources for various world regions, 2007

	Sub-Saharan Africa	South Asia	Latin America and Caribbean	MEDCs
Population growth rate (% per year)	2.42	1.09	1.25	0.32
Proportion of arable land irrigated (%)	3.8	39.3	11.6	11.9
Fertiliser use (kg/ha)	9	109	85	125
Cereal production per person (kg/ha)	128	224	259	746
Livestock production (kg/ha)	128	121	198	248

Globalisation

Fig. 5

Value of exports of manufactured goods and services per capita, 2007

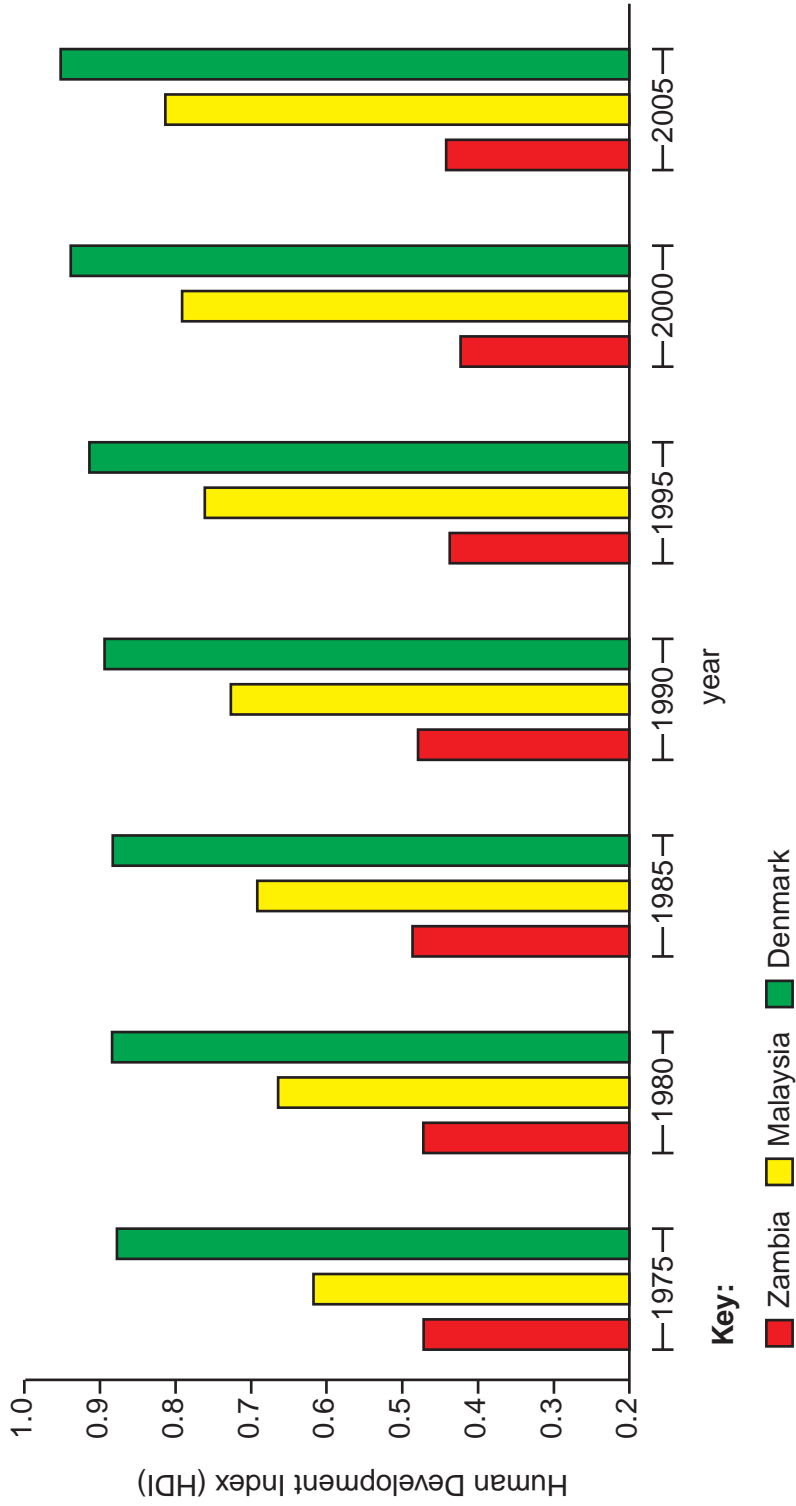


Key:
■ ≥ 5000
■ 1000 to 4999
■ ≤ 999
■ no data

Figures in US\$, average annual value

Development and inequalities

Fig. 6
Changes in the Human Development Index (HDI) for three countries



HDI is a composite index made up of the following factors: life expectancy at birth; adult literacy; enrolment in schools; GDP per capita related to local purchasing power.

**Copyright Information**

OCR is committed to seeking permission to reproduce all third-party content that it uses in its assessment materials. OCR has attempted to identify and contact all copyright holders whose work is used in this paper. To avoid the issue of disclosure of answer-related information to candidates, all copyright acknowledgements are reproduced in the OCR Copyright Acknowledgements Booklet. This is produced for each series of examinations, is given to all schools that receive assessment material and is freely available to download from our public website (www.ocr.org.uk) after the live examination series.

If OCR has unwittingly failed to correctly acknowledge or clear any third-party content in this assessment material, OCR will be happy to correct its mistake at the earliest possible opportunity.

For queries or further information please contact the Copyright Team, First Floor, 9 Hills Road, Cambridge CB2 1GE.

OCR is part of the Cambridge Assessment Group; Cambridge Assessment is the brand name of University of Cambridge Local Examinations Syndicate (UCLES), which is itself a department of the University of Cambridge.